



# INSTRUCTION BULLETIN

No. 9021382  
Machine: 6100  
Published: 11-2023  
Rev. 00

**NOTE: DO NOT DISCARD the Parts List from the Instruction Bulletin. Place the Parts List in the appropriate place in the machine manual for future reference. Retaining the Parts List will make it easier to reorder individual parts and will save the cost of ordering an entire kit.**

*NOTE: Numbers in parenthesis ( ) are reference numbers for parts listed in Bill of Materials.*

Installation instructions for **kit number 9021425**

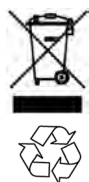
Kit installation must be performed by TennantTrue® service or an authorized service provider.

## SYNOPSIS:

This kit contains the parts needed to install a blue spotlight kit on 6100 sweepers.  
Please follow step-by-step instructions.

## SPECIAL TOOLS/CONSIDERATIONS: NONE

(Estimated time to complete: 2 hours)



### PROTECT THE ENVIRONMENT

Please dispose of packaging materials, used machine components such as batteries and fluids in an environmentally safe way according to local waste disposal regulations.

Always remember to recycle.

## PREPARATION:

**FOR SAFETY: Before leaving or servicing machine, stop on level surface, turn off machine, and remove key.**

1. Shake the filter and empty the hopper.
2. Lift and lock the operator seat assembly open.
3. Disconnect the battery cable from the batteries.



**WARNING: Always disconnect battery cables from machine before working on electrical components.**

4. Remove the left shroud from the machine. Set the left shroud aside.

5. Remove the hopper from the machine. Set the hopper aside. (Fig. 1)



FIG. 1

6. Unlatch the latches securing the filter tray to the filter panel and lower the filter tray. (Fig. 2)



FIG. 2

#### INSTALLATION:

1. Remove the hardware securing the front shroud to the frame of the machine and instrument panel. Set all removed hardware aside. (Fig. 3/Fig. 4/Fig. 5/Fig. 6)

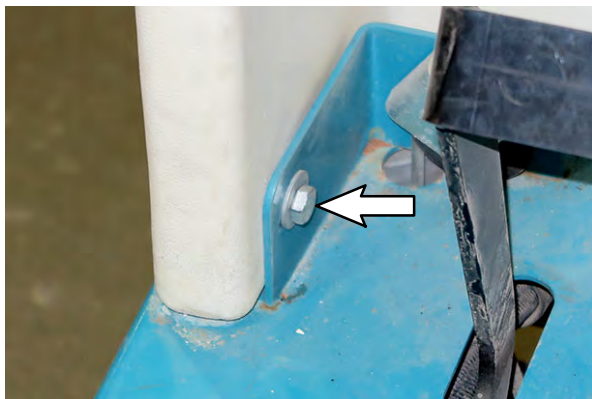


FIG. 3



FIG. 4

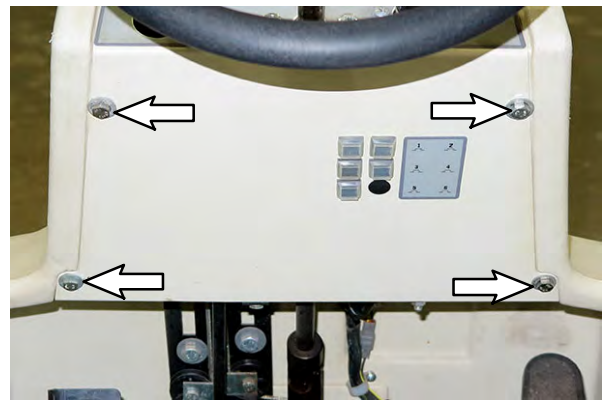


FIG. 5

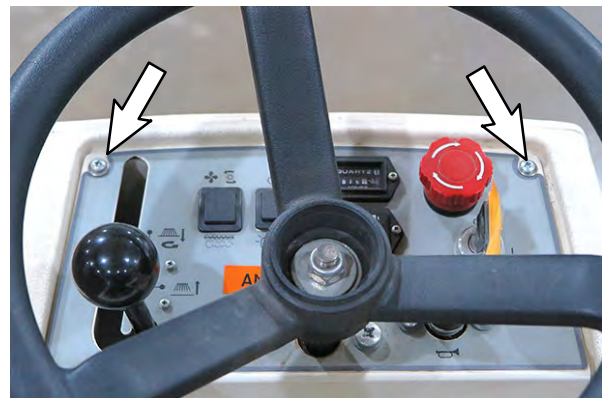


FIG. 6

2. Remove the hardware securing the p-clamp/main wire harness to the front shroud. Set the hardware aside. Leave the p-clamp installed on the main wire harness. (Fig. 7)

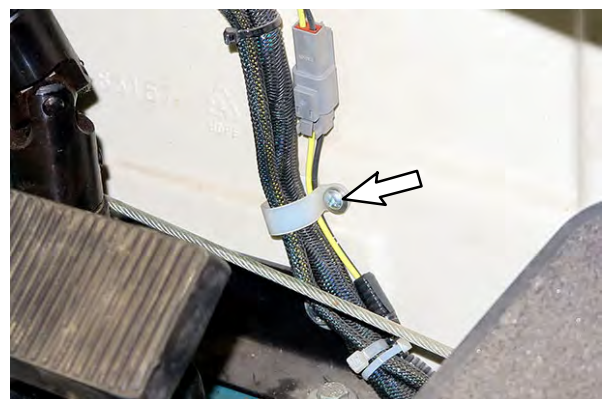
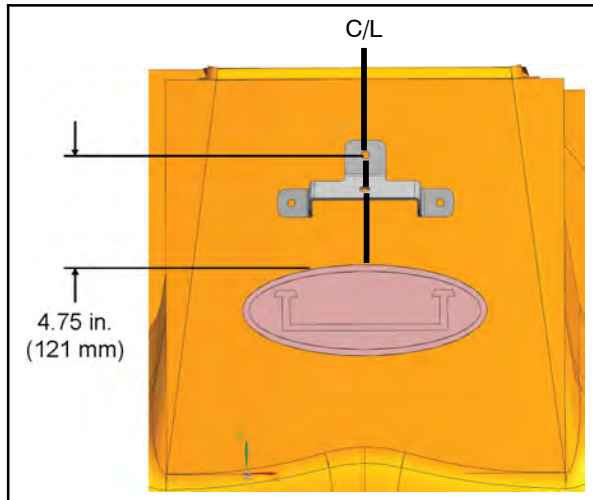


FIG. 7

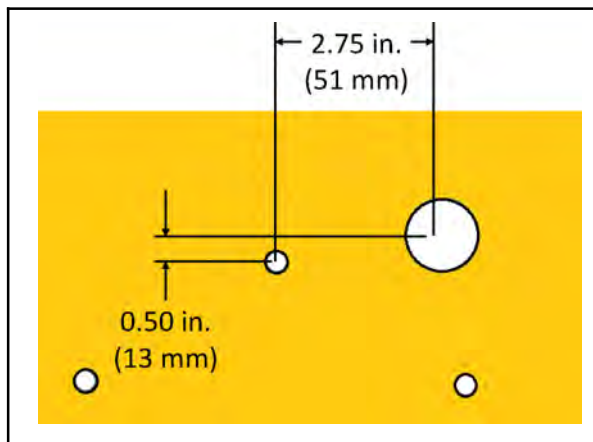
3. Remove the front shroud from the machine. Set the front shroud aside.

4. Position the front cover spotlight mounting bracket (3) onto the front cover and mark the locations for the three front cover spotlight mounting bracket mounting holes onto the front cover. (Fig. 8)



**FIG. 8**

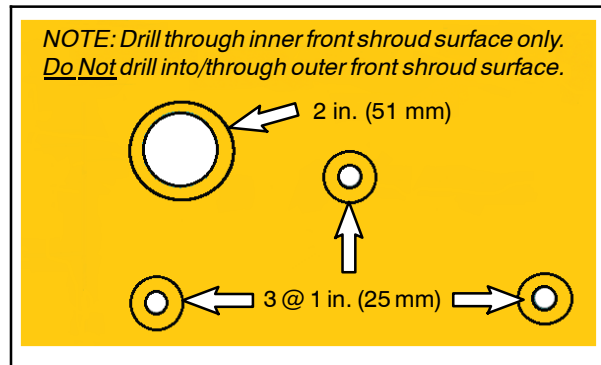
5. Drill a 0.375 in. (9.5 mm) hole completely through each hole marked on the front shroud in the previous step. Drill completely through both sides of the shroud. (Fig. 8)
6. Measure and mark a location for the harness routing hole onto the front shroud. (Fig. 9)



**FIG. 9**

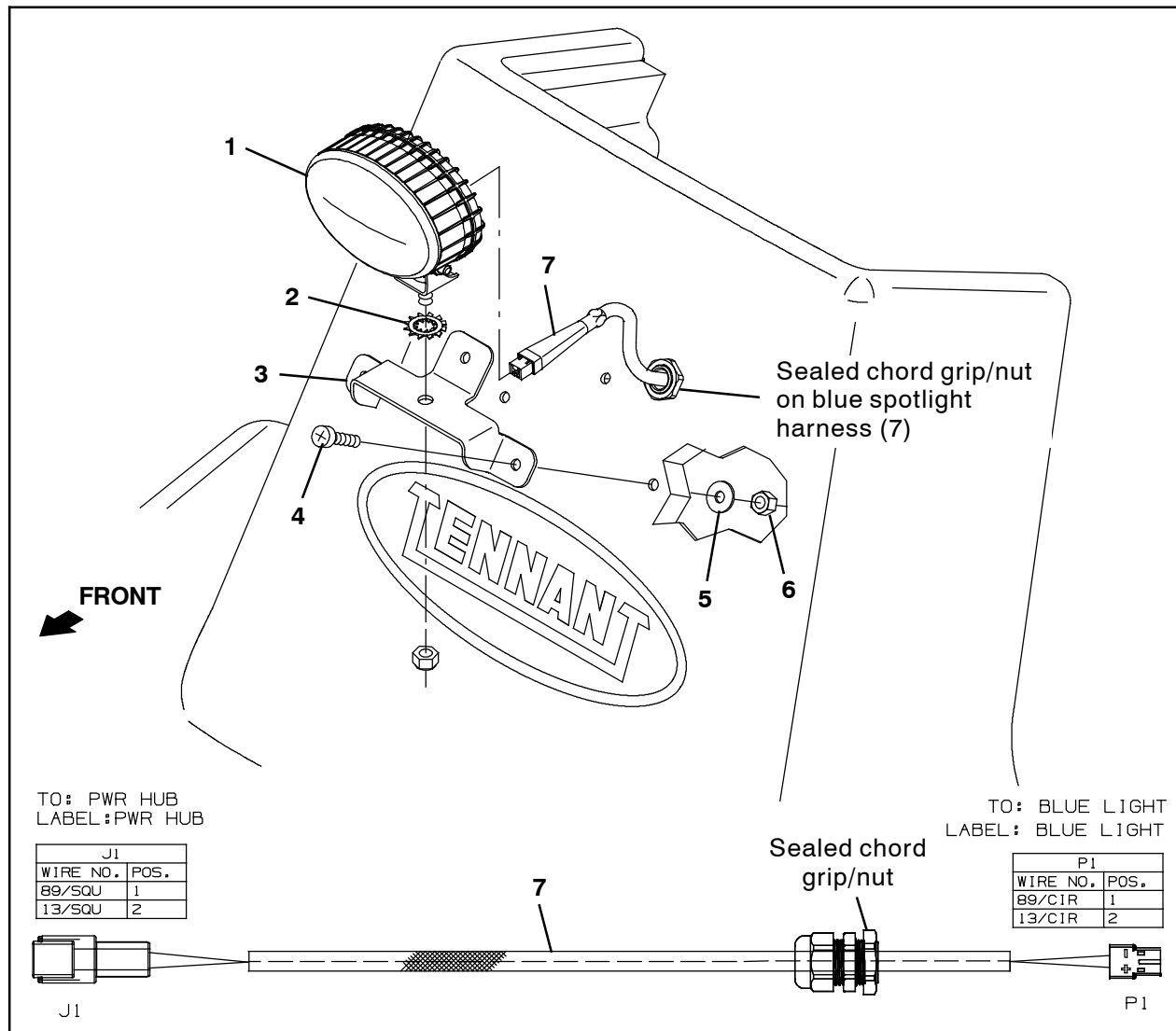
7. Drill a 0.886 in. (22.5 mm) hole for harness routing completely through the front shroud. (Fig. 9)

8. From inside the shroud drill a 1 in. (25 mm) hole through each 0.375 in. (9.5 mm) hole in the inner surface of the front shroud. Do not drill into/through the outer surface. (Fig. 10)



**FIG. 10**

9. From inside the shroud drill a 2 in. (51 mm) hole through the 0.886 in. (22.5 mm) hole in the inner surface of the front shroud. Do not drill into/through the outer surface. (Fig. 10)

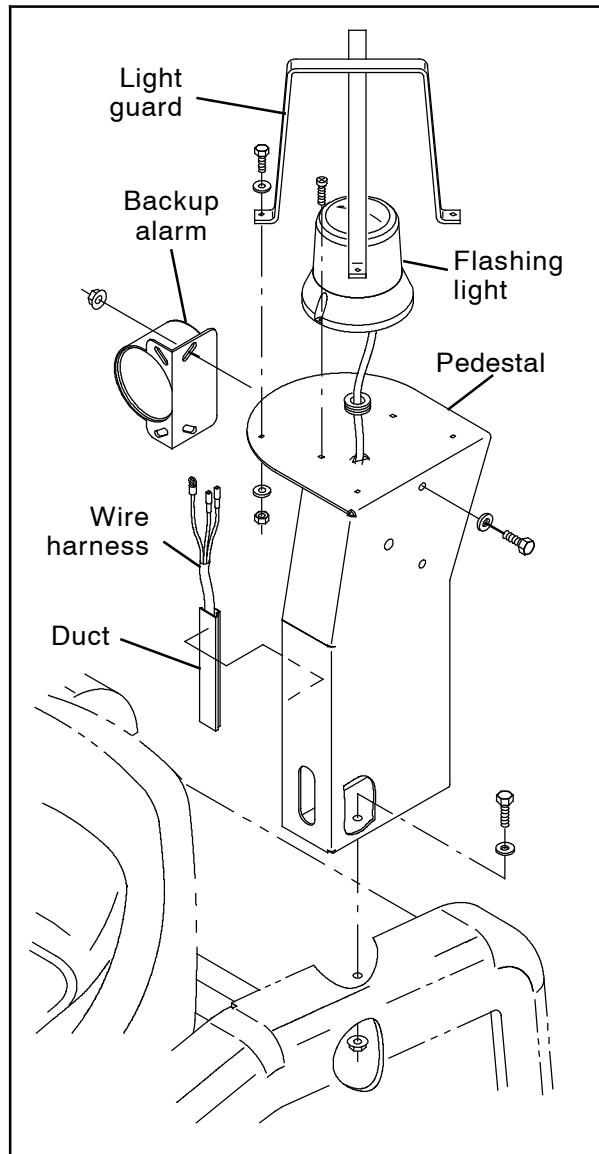


**FIG. 11**

10. Use three M8 pan screws (4), three M8 fender washers (5), and three M8 hex nuts (6) to install the front cover spotlight mounting bracket (3) onto the front shroud. (Fig. 11)
11. Remove the hex nut included with one of the blue LED spotlights (1) from the light. (Fig. 11)
12. Use the hex nut removed from the blue LED spotlight (1) in the previous step and a lock washer (2) to install the blue LED spotlight onto the front cover spotlight mounting bracket (3). (Fig. 11)
13. Remove the nut from the sealed chord grip on the 67 in. blue spotlight harness (7). (Fig. 11)
14. Route the 67 in. blue spotlight harness (7) connector to be connected to the blue LED spotlight (1) installed on the front shroud through the 0.886 in. (22.5 mm) hole previously drilled into the front shroud. (Fig. 11)
15. Connect the 67 in. blue spotlight harness (7) to the blue LED spotlight (1) installed on the front shroud. (Fig. 11)
16. Use the sealed chord grip/nut on the blue spotlight harness (7) to secure the harness to the front shroud. (Fig. 11)
17. Position the front shroud onto the machine, but do not reinstall the hardware.

**NOTE:** If installing the blue spotlight kit onto a machine equipped with strobe light and/or backup alarm option, proceed to the following step. If machine is not equipped with optional flashing light and/or backup alarm, proceed to Step 21.

18. Disconnect the harness from the flashing light and/or backup alarm. (Fig. 12)

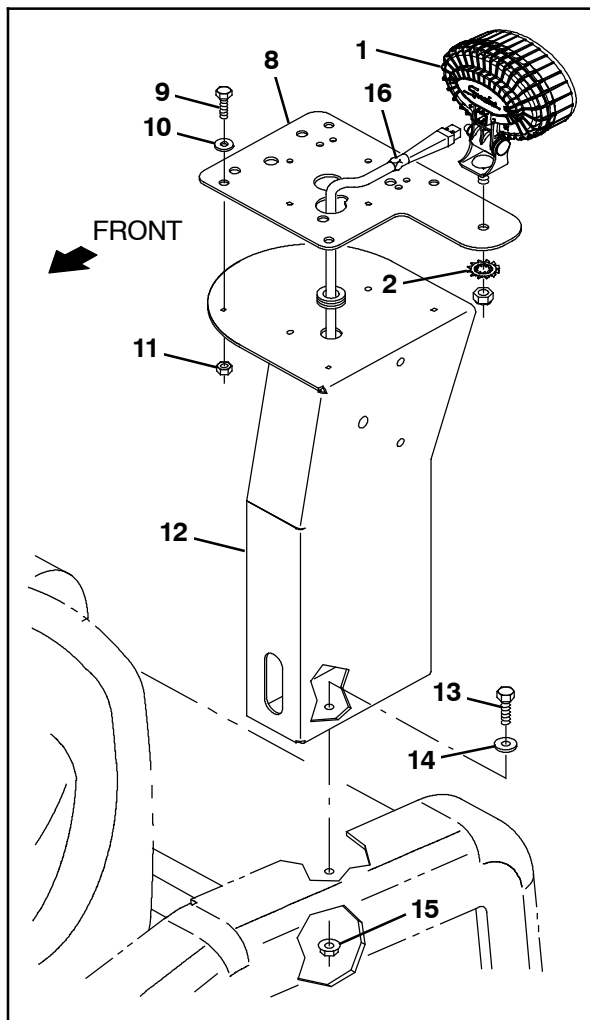


**FIG. 12**

19. Remove the light guard/flashing light, and/or the backup alarm from the pedestal. Set the light guard/flashing light, and/or the backup alarm and all mounting hardware aside. (Fig. 12)

20. Remove the pedestal from the filter box assembly. Discard the pedestal and mounting hardware. (Fig. 12)

21. Use four M5 hex screws (9), four flat washers (10), and four M5 hex nuts (11) to install the rear spotlight bracket (8) onto the pedestal (12). (Fig. 13)



**FIG. 13**

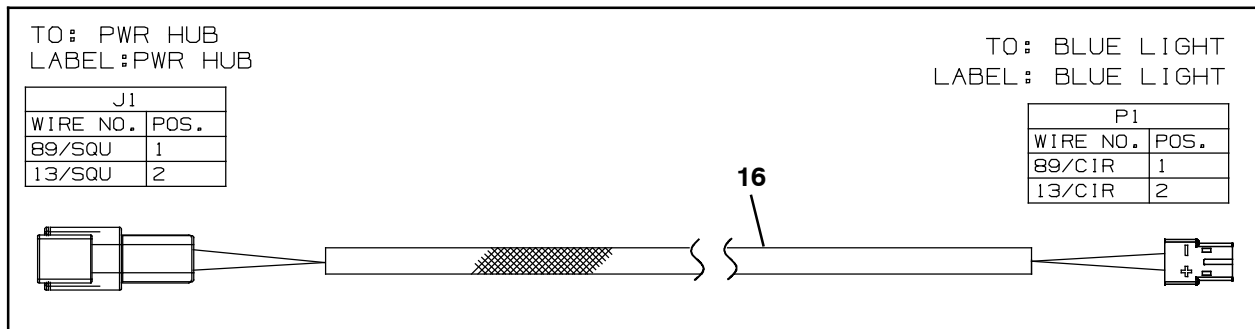
**22. Machines not equipped with strobe light and/or backup alarm option only:** Remove the two button plugs from the filter box assembly. Discard the button plugs.

23. Use two M8 hex screws (13), two flat washers (14), and two M8 flange hex nuts (15) to install the pedestal (12) onto the filter box assembly. (Fig. 13)

**24. Machines equipped with strobe light and/or backup alarm option only:** Install these items previously removed from the removed pedestal onto the pedestal (12). (Fig. 12/Fig. 13)

**25. Machines equipped with strobe light and/or backup alarm option only:** Reconnect the wire harness to the flashing light and/or backup alarm.



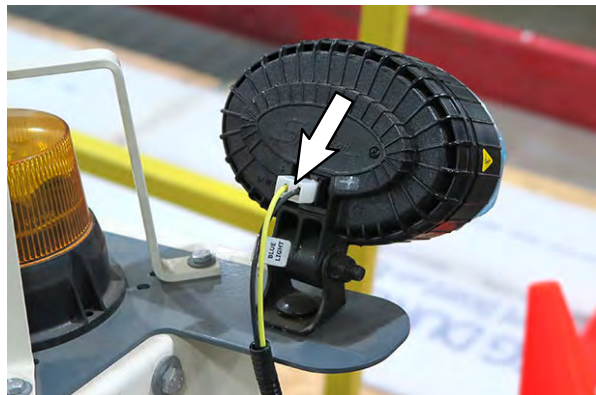


**FIG. 14**

26. Remove the hex nut included with the remaining blue LED spotlight (1) from the light. (Fig. 13)

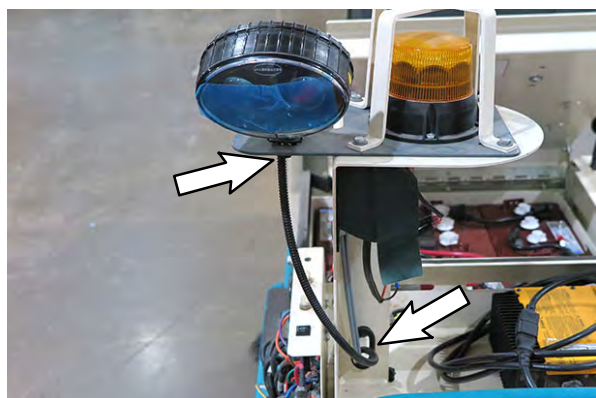
27. Use the hex nut removed from the blue LED spotlight (1) in the previous step and a lock washer (2) to install the blue LED spotlight (1) onto the rear spotlight bracket (8). (Fig. 13)

28. Connect the 24 in. blue spotlight harness (16) to the blue LED spotlight (1) installed on the back of the machine. (Fig. 14)



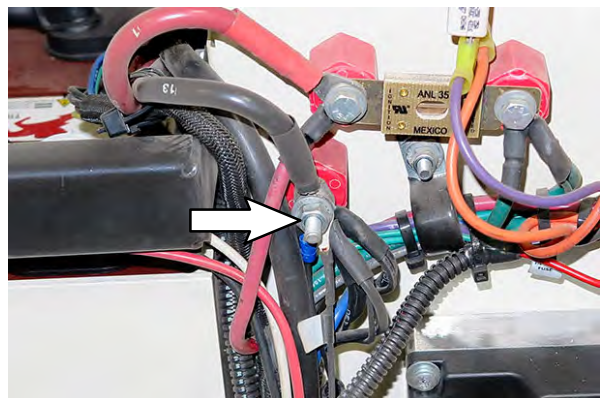
**FIG. 15**

29. Route the 24 in. blue spotlight harness (16) down around the rear of the pedestal (12) and through the routing hole in the pedestal. (Fig. 16)



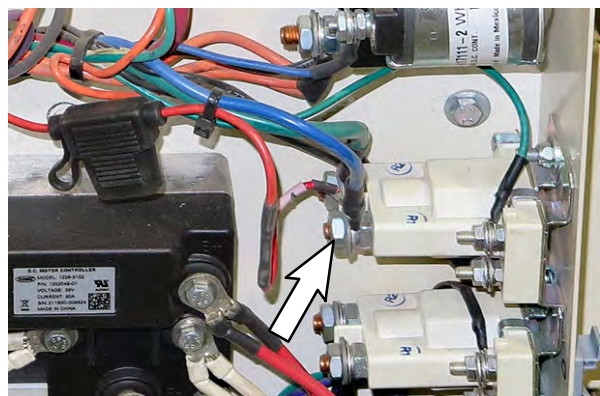
**FIG. 16**

30. Connect the blue spotlight harness (17) to the ground standoff. (Fig. 17/Fig. 19)

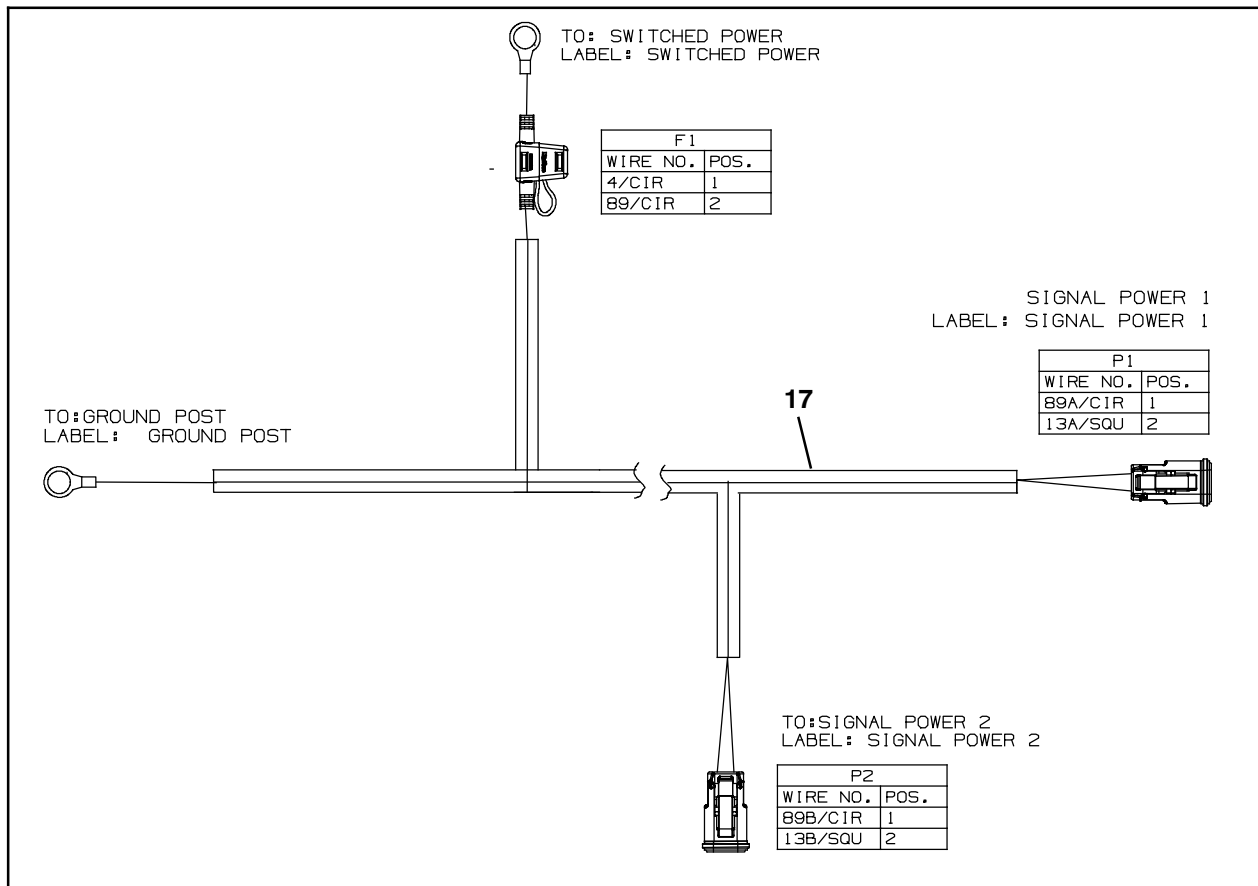


**FIG. 17**

31. Connect the blue spotlight harness (17) to the M1 relay switched power terminal. (Fig. 18/ Fig. 19)

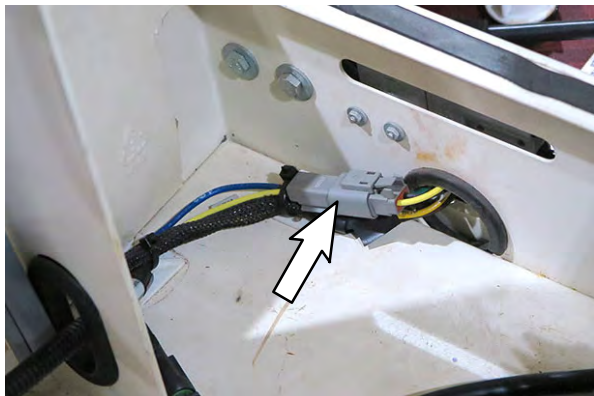


**FIG. 18**



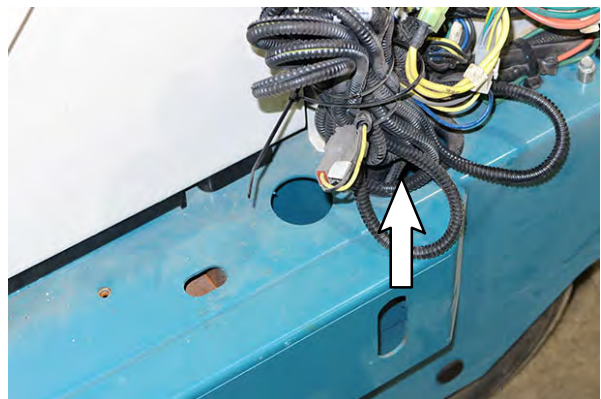
**FIG. 19**

32. Route the blue spotlight harness (17) Signal Power 2 lead through the hole in the rear lintel towards the back of the machine and connect the blue spotlight harness to the 24 in. blue spotlight harness (16). (Fig. 20/Fig. 19/ Fig. 14)

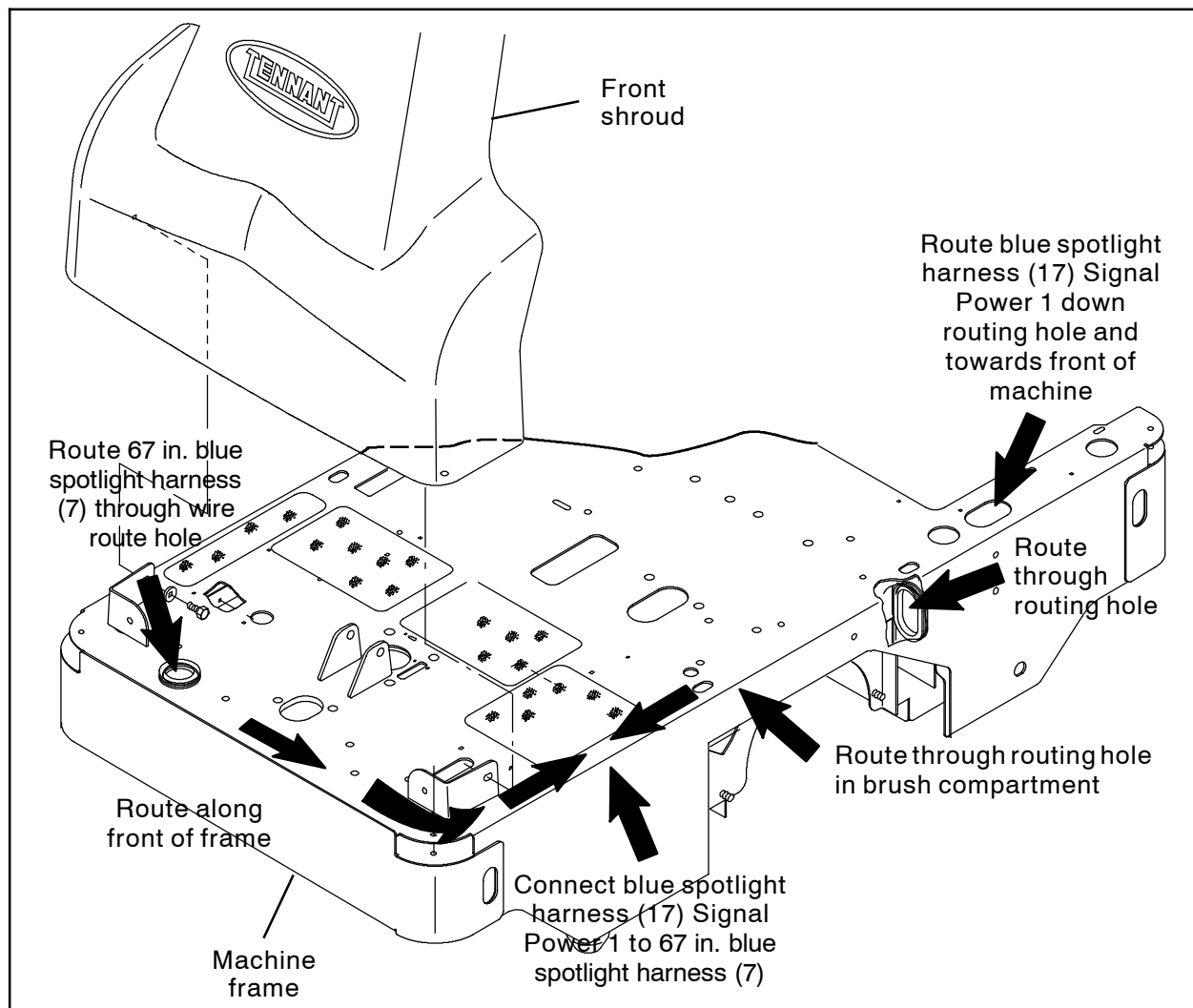


**FIG. 20**

33. Route the blue spotlight harness (17) Signal Power 1 lead down the routing hole in the frame of the machine and towards the front of the machine. (Fig. 21/Fig. 19)

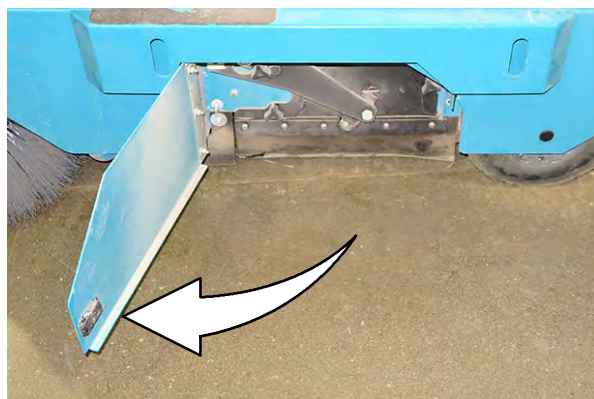


**FIG. 21**



**FIG. 22**

34. Open the brush access door. (Fig. 23)



**FIG. 23**

35. Continue routing the blue spotlight harness (17) Signal Power 1 lead along the main wire harness, through the hole in the brush compartment, and to the front of the machine. (Fig. 24/ Fig. 19)



**FIG. 24**



36. Route the 67 in. blue spotlight harness (7) along the main wire harness, through the wire route hole located at the front of the machine, and down to the floor. (Fig. 25)



**FIG. 25**

37. Continue routing the 67 in. blue spotlight harness (7) along the main wire harness, across the front of the machine, and around towards the open brush access door. (Fig. 22)

38. Connect the 67 in. blue spotlight harness (7) to the blue spotlight harness (17) Signal Power 1. (Fig. 22/Fig. 19/Fig. 11)

39. Use cable ties to secure the 67 in. blue spotlight harness (7) blue spotlight harness (17) Signal Power 1 lead to the main wire harness so both harnesses are off the floor and away from any moving parts. (Fig. 22/ Fig. 11)

40. Tighten all hardware to completely secure the front shroud to the machine.

41. Reinstall all parts/components removed to install the blue spotlight kit onto the machine.

42. Reconnect the battery cable to the batteries.

43. Test the machine. Turn the key switch ON. Both blue spotlights should illuminate immediately when the key switch is turned to ON position.

#### **Bill Of Materials For Spotlight Kit, Blue, CI [6100] - 9021425**

<b>Ref.</b>	<b>Tennant Part No.</b>	<b>Description</b>	<b>Qty.</b>
1	1240687	Light, Spot, Blue, LED	2
2	41143	Washer, Lock, Int-Ext, 0.50	2
3	1076808	Brkt, Blu Spotlight, Fr, Cover Mtg	1
4	1031665	Screw, Pan, M8 X 1.25 X 25, Blk	3
5	39890	Washer, Flat, M8, Fendr	3
6	08713	Nut, Hex, Lock, M8 X 1.25, NL, SS	3
7	1077008	Harness, Blue Spotlight [67" Light Ext]	1
8	1076789	Brkt, Blu Spotlight, Rr, Frame Mtg	1
9	09252	Screw, Hex, M5 X 0.80 X 20, 8.8	4
10	19066	Washer, Flat, 0.25B 0.56D .05, PL, 10	4
11	06549	Nut, Hex, M5 X 0.80 X 16, 8.8	4
12	1077030	Pedestal, Light/Alarm [Gray]	1
13	16735	Screw, Hex, M8 X 1.25 X 16, 8.8	2
14	39349	Washer, Flat, 0.31, SAE	2
15	07791	Nut, Hex, Flng, M8 X 1.25	2
16	1077006	Harness, Blu Spotlight [24" Light Ext]	1
17	1077037	Harness, Blu Spotlight [6100]	1

**TENNANT COMPANY**  
 10400 Clean Street  
 Eden Prairie, MN 55344- 2650